



Over one-half
of the world's population
within 100 kilometres
of the sea.



www.gefcoral.org

Coral Reef Targeted Research and Capacity Building for Management (CRTR)





Over **one-half**
of the world's population
within **100 kilometres**
of the sea.



www.gefcoral.org

- Global Environment Facility, The World Bank & The University of Queensland
- Planned Three Phases over 15 years
- Global Network of more than 70 scientists and 50 Institutions
- A network of students – future leaders



Over **one-half**
of the world's population
within **100 kilometres**
of the sea.



www.gefcoral.org

Filling knowledge gaps in key areas:

- Coral Bleaching
- Disease
- Connectivity
- Restoration
- Remote Sensing
- Modeling and Decision Support

Building Capacity in Four Regions

Coral Reef Targeted Research Capacity-Building Centers of Excellence



Examples of policy change directly associated with the Project

- (i) **At the International level, the project's 2007 paper in Science** has been extremely influential in informing the international debate on ecological tipping points and safe targets for CO₂ concentrations surrounding negotiations for a UNFCCC post-Kyoto Protocol in Copenhagen and beyond.
- (ii) **At the National Level, the Belize Fisheries Department's new regulations to protect parrotfish from commercial harvest** in light of their critical role as herbivores in controlling algal cover and maintaining reef resilience;
- (iii) **At the local level, MPA Enforcement Protocol Guide** is now used as standard operating procedure for law enforcement activities in protected areas in the northern Philippines—adoption of these standards increases scope for collaboration between municipalities and helps enforcers within Local Government Units discharge their duties more cost-effectively.

Over one-half
of the world's population
within **100 kilometres**
of the sea.

www.gefcoral.org





Over **one-half**
of the world's population
within **100 kilometres**
of the sea.



www.gefcoral.org

- More than 25 scientific training and capacity enhancing workshops held in all COEs during Phase 1
- More than 390 publications that include refereed journal articles, books and book chapters, and symposium proceedings
- Information products translated for different policy and management audiences

Over **one-half**
of the world's population
within **100 kilometres**
of the sea.

5th IWC Cairns. October 26, 2009

The Mesoamerican Center of Excellence at the Reef System Academic Unit in Mexico

Roberto Iglesias-Prieto
Head of the Reef Systems Unit at Puerto Morelos
Instituto de Ciencias del Mar y Limnología
Universidad Nacional Autónoma de México
Chair of the Mesoamerican CoE of the CRTR

Over **one-half**
of the world's population
within **100 kilometres**
of the sea.

5th IWC Cairns. October 26, 2009

The Mesoamerican Center of Excellence at the Reef System Academic Unit in Mexico

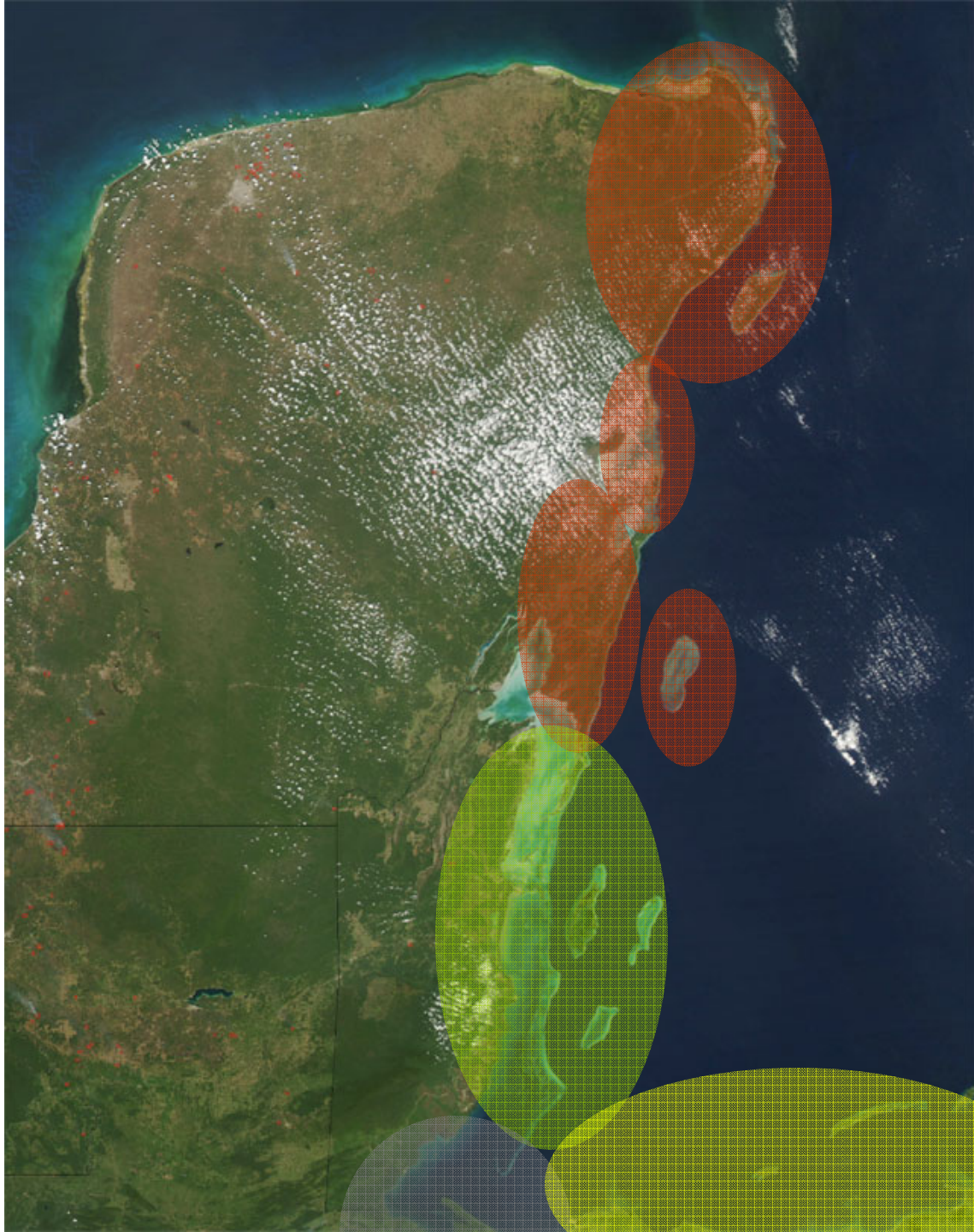
- Local Research
- Support the work of the Working Groups
- Building Capacity
- Link the scientific results with managers and decision makers

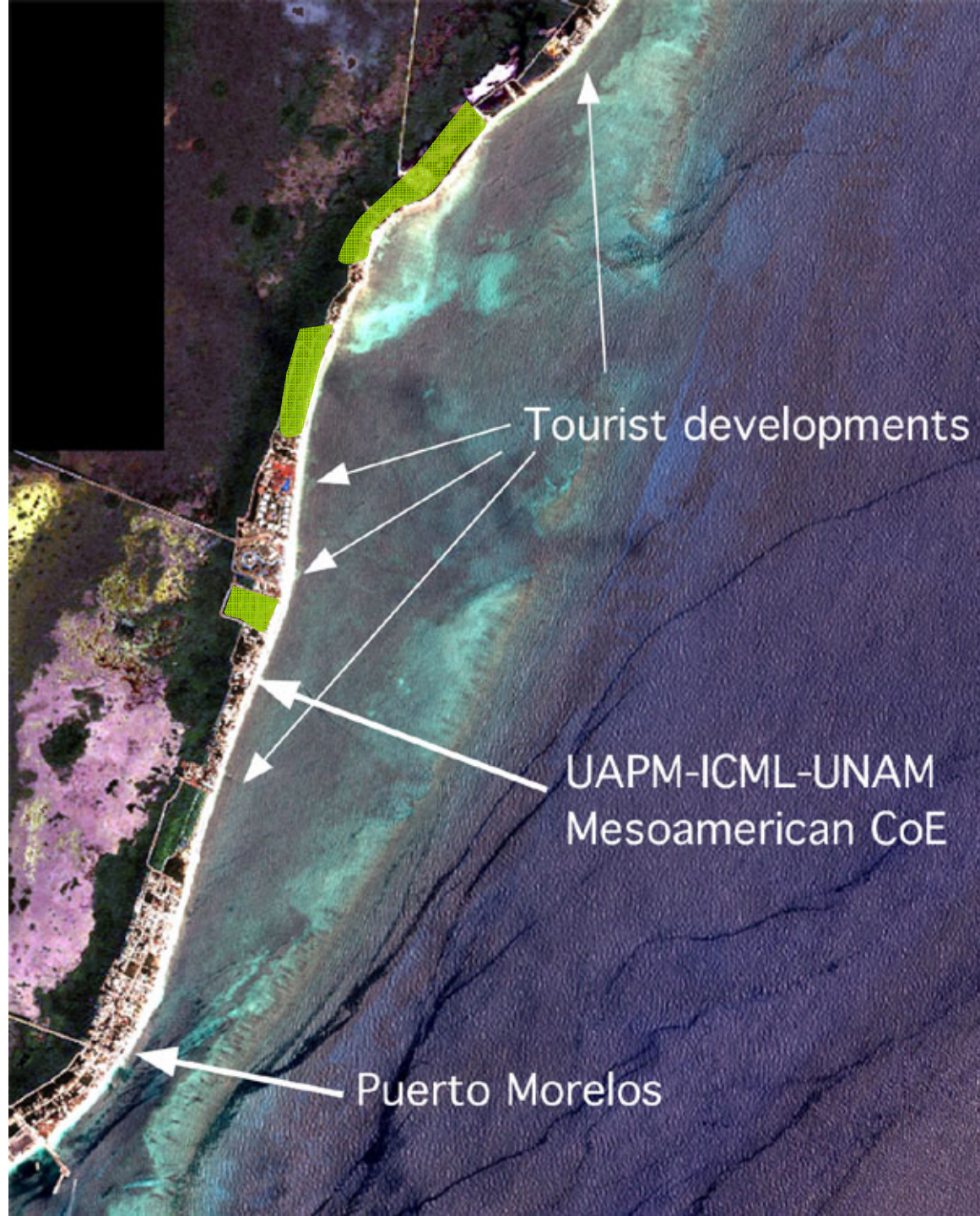
Over one-half
of the world's population
within 100 kilometres
of the sea.

5th IWC Cairns. October 26, 2009

Workshop on Coral Bleaching Puerto Morelos Quintana Roo May 11-June 3 2005



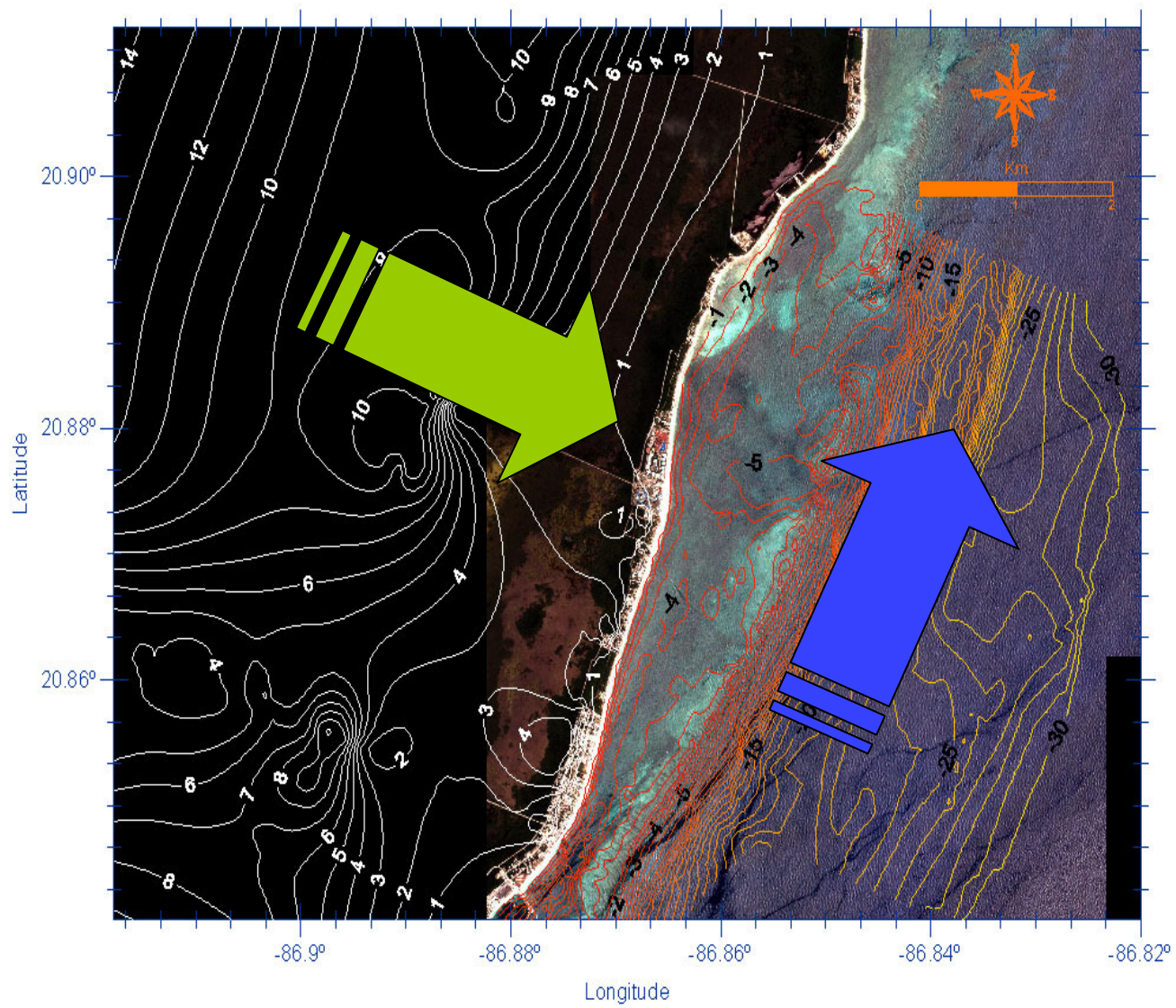


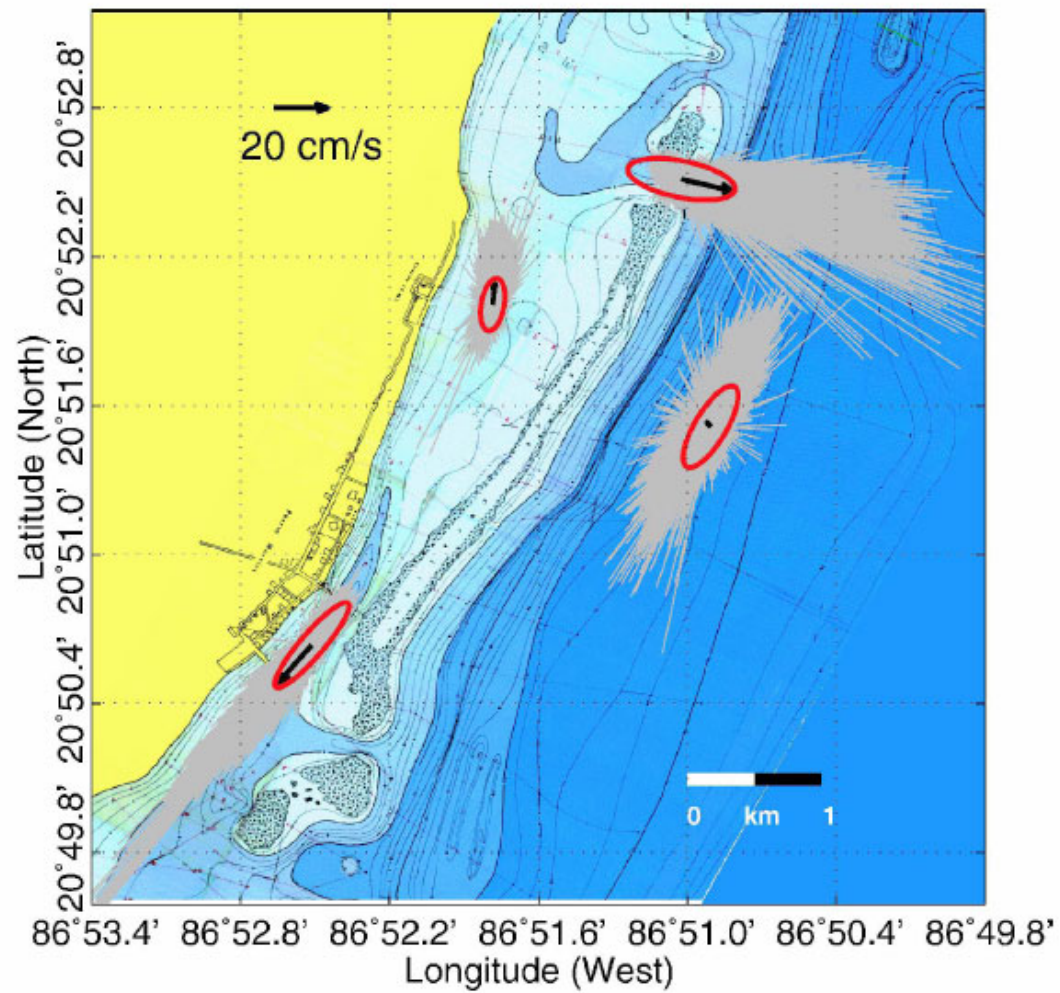


Tourist developments

UAPM-ICML-UNAM
Mesoamerican CoE

Puerto Morelos

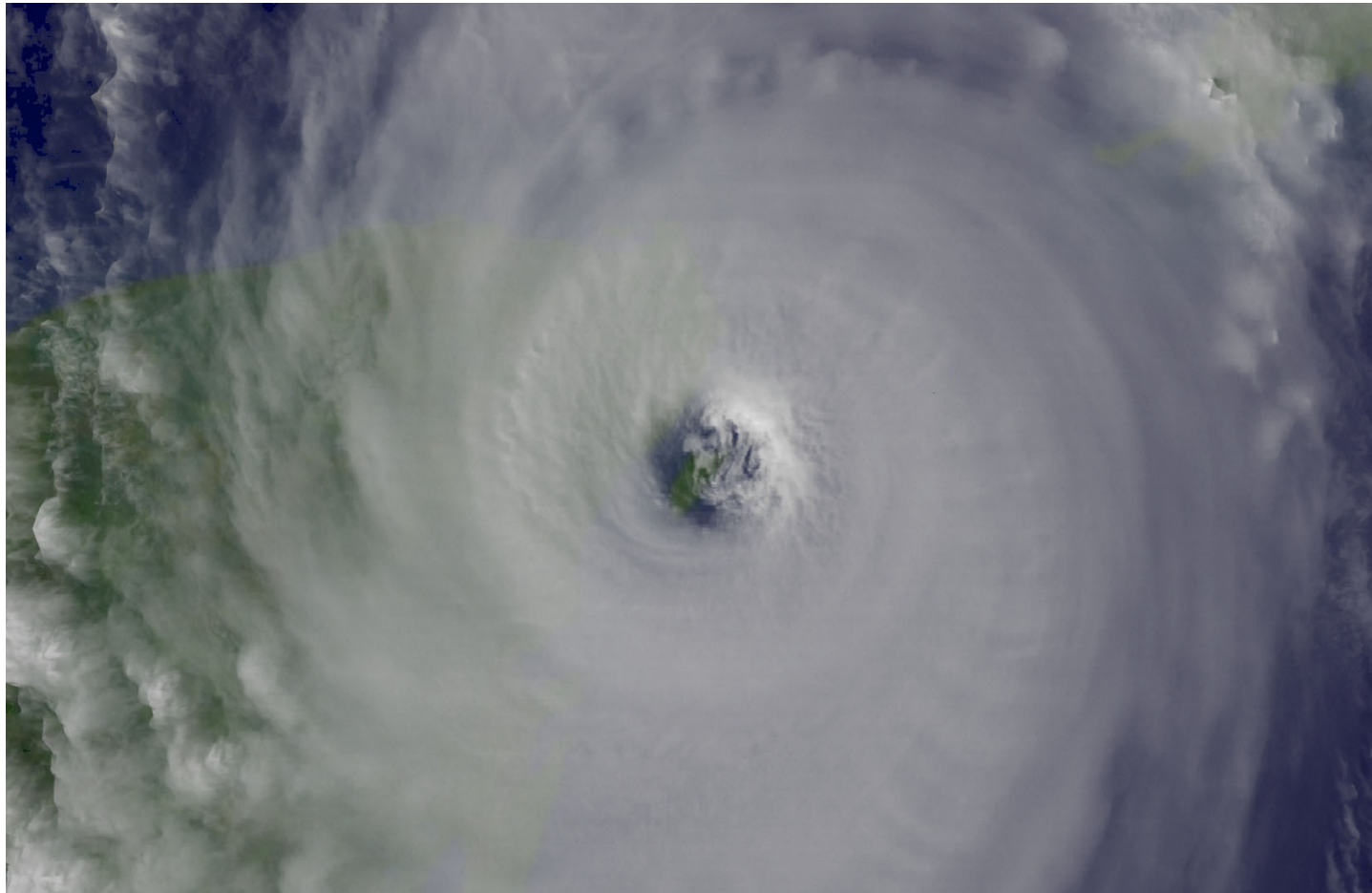




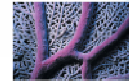
Over one-half
of the world's population
within **100 kilometres**
of the sea.

5th IWC Cairns. October 26, 2009

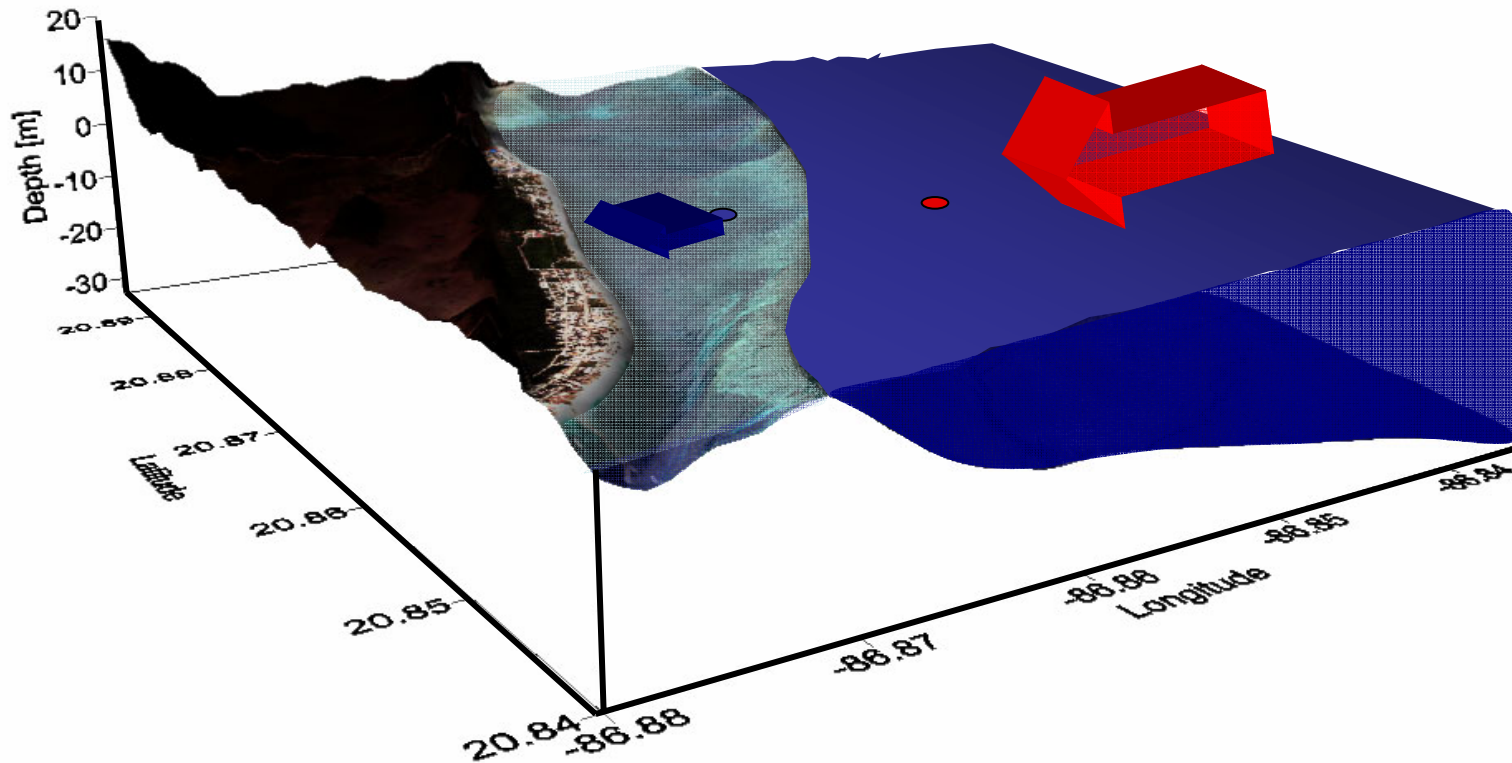
Hurricane Wilma October 2005



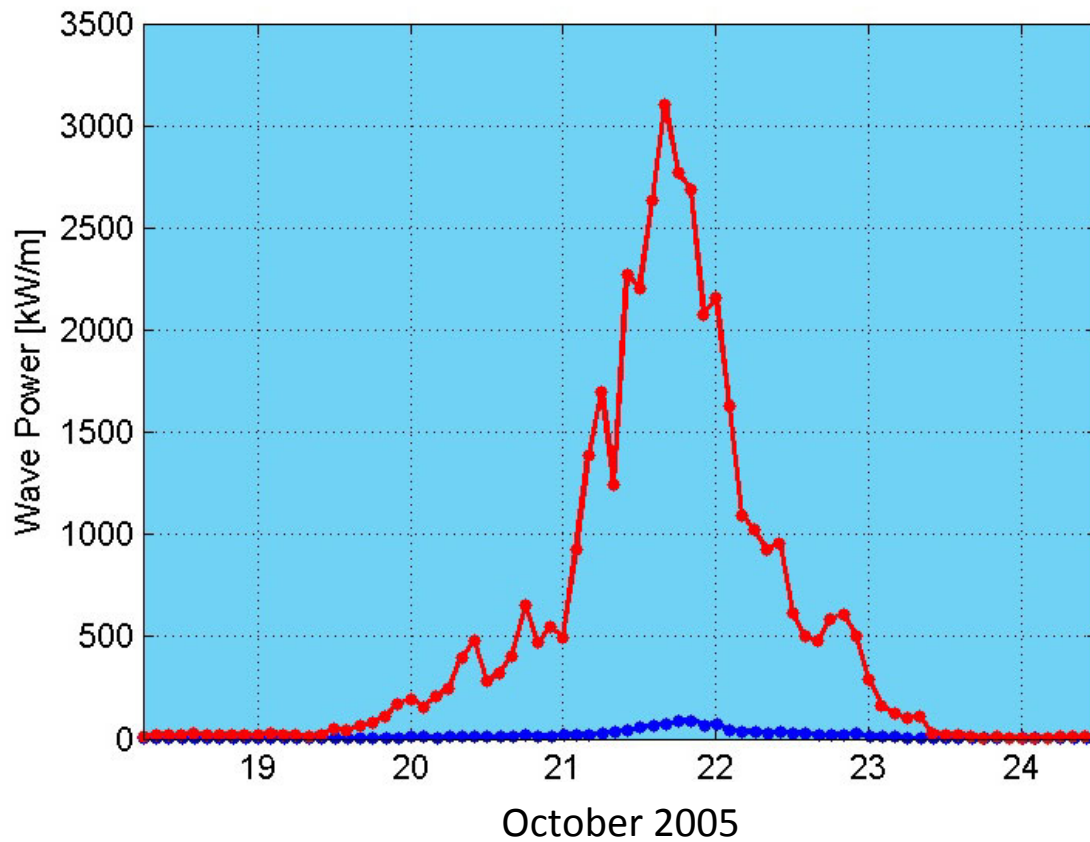
Over one-half
of the world's population
within **100 kilometres**
of the sea.



5th IWC Cairns. October 26, 2009



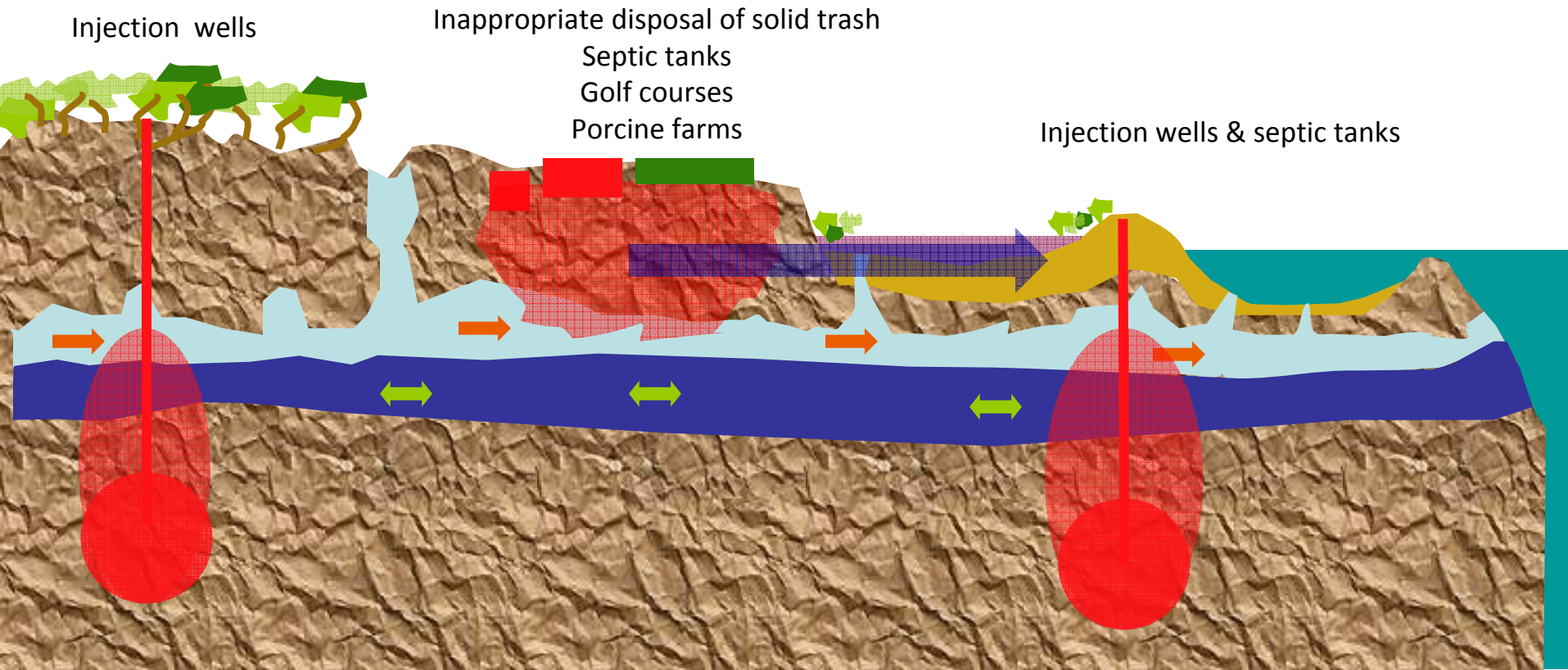
Over **one-half**
of the world's population
within **100 kilometres**
of the sea.



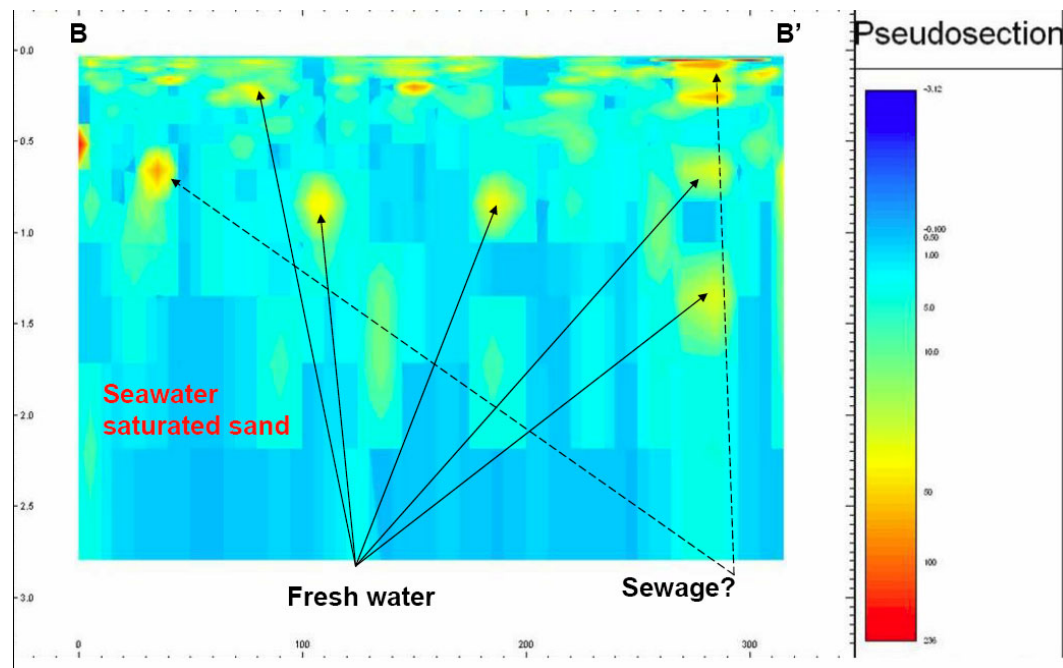
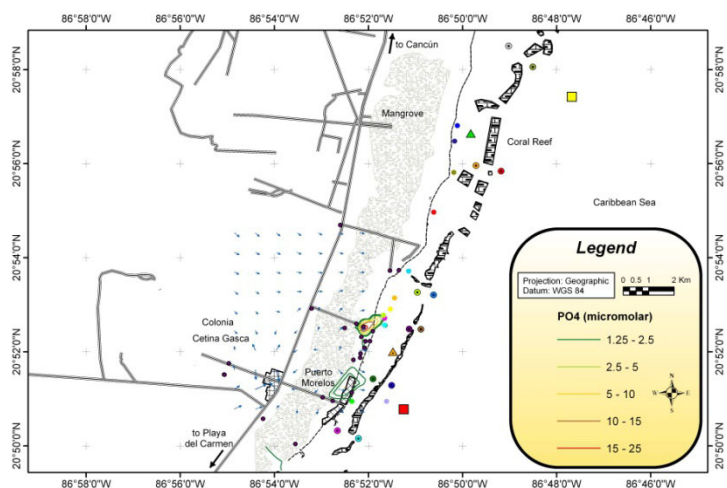
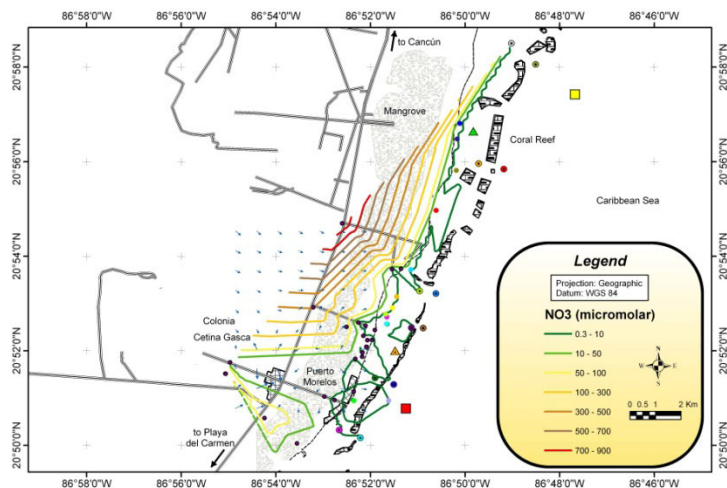
Over **one-half**
of the world's population
within **100 kilometres**
of the sea.



5th IWC Cairns. October 26, 2009



Over one-half
of the world's population
within **100 kilometres**
of the sea.



5th IWC Cairns. October 26, 2009

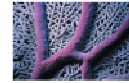
Over one-half
of the world's population
within 100 kilometres
of the sea.



- The course *Light and Photosynthesis on Coral Reefs* is considered a bench mark in the field training more than 80 graduate students and scientist from 20 countries

5th IWC Cairns. October 26, 2009

Over one-half
of the world's population
within 100 kilometres
of the sea.



The course *Marine Protected Areas* trained 120
students and practitioners from 8 countries within the