

# GEF SUPPORT TO LAKE VICTORIA BASIN COMMISSION

FIFTH GEF BIENNIAL  
INTERNATIONAL WATERS  
CONFERENCE (IWC5)

CAIRNS, AUSTRALIA

24<sup>th</sup> – 29<sup>th</sup> October 2009

**Mr. Gerson Fumbuka,**

Lake Victoria Basin Commission Secretariat,  
Kisumu, Kenya



# LAKE VICTORIA

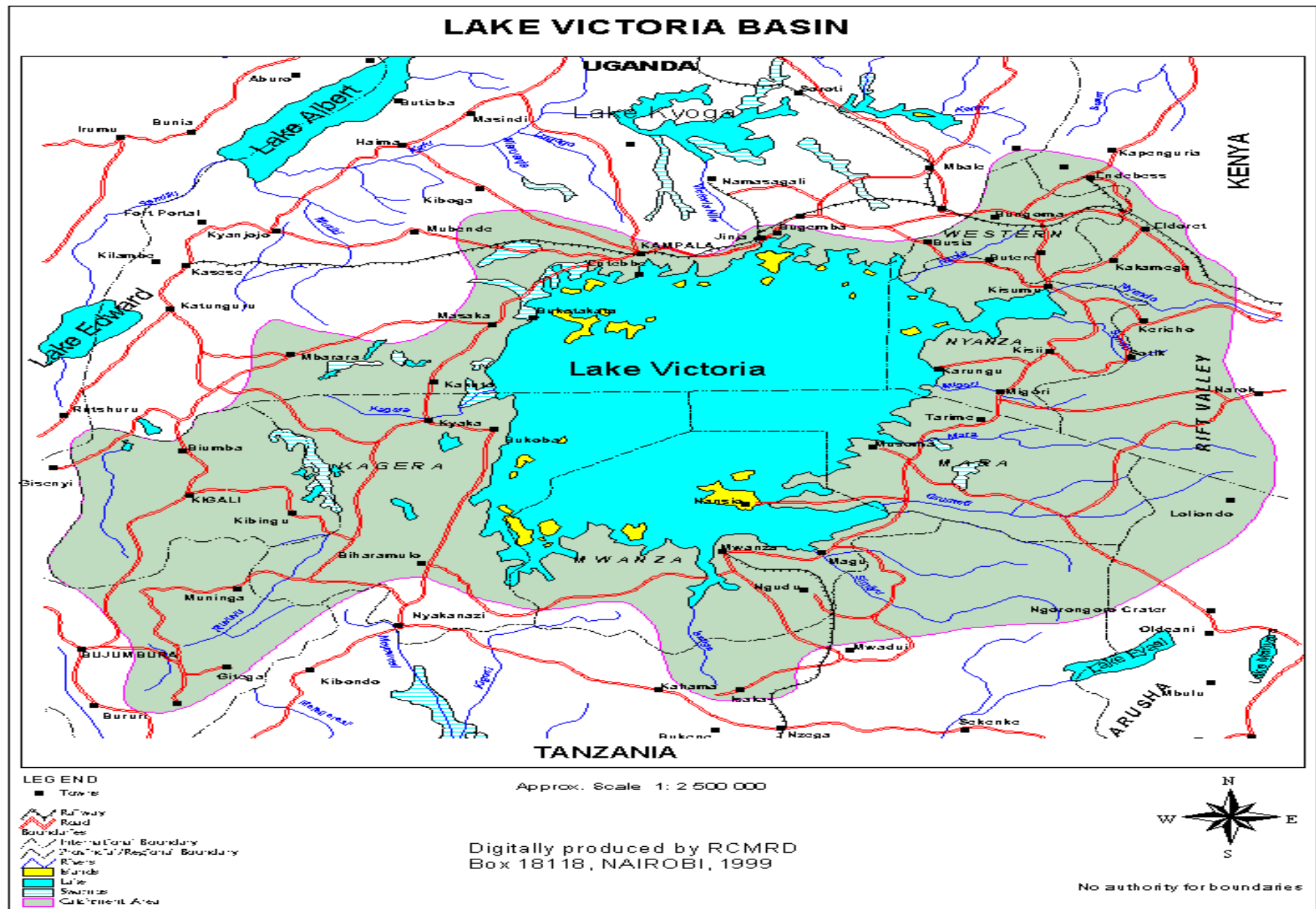
- **Lake Victoria is the second largest fresh water in the world. With a surface area of 68,800 sq. km shared between Kenya, Uganda and Tanzania.**
- **Kenya share 6%, Uganda 43% and Tanzania 51%. The catchment's area of Lake Victoria is 193,000 sq. Km which extends to the Republics of Rwanda & Burundi.**
- Is a shared economic growth
- Endowed with reach natural resources and economic activities including fishing, transport, tourism, mining, agriculture, power generation, etc.

More information is available at:

<http://www.lvbcom.org>

<http://www.eac.int>

[fumbuka@lvbcsec.org](mailto:fumbuka@lvbcsec.org)



**Shaded area showing lake Victoria Basin**



# GEF SUPPORT TO LAKE VICTORIA BASIN COMMISSION

- LVEMP I : From 1997 – 2005

The Project was implemented under a Tripartite Agreement signed by the three Partner States in 1994 before the signing of the EAC Treaty in 1999. It was financed by WB and GEF. This project has been the biggest undertaking in the Lake Victoria Basin and it was for most part implemented by the personnel from the three countries.

- LVEMP II

From 2009 supports 5 Countries.

# GEF SUPPORT UNDER LVEMP I

- LVEMP I focused to:
  - a) Provide information to improve management of the lake system;
  - b) Establish mechanisms of cooperative management by the three riparians;
  - c) Identify and demonstrate practical, self-sustaining remedies; and
  - d) Build capacity for ecosystem management

# SUMMARY OF ACHIEVEMENT UNDER GEF FUNDING LVEMP I

- Research activities improved the understanding of the lake system;
- LVFO was established to coordinate the national fisheries research and management activities;
- Upgraded technical skills, facilities and equipment of the water and fisheries research and management institutions at national level;
- BMU were established to support co-management of the fisheries;
- Implementation of pilot community-based catchment rehabilitation, particularly with regards to soil and water conservation activities; and
- implementation of biological control measures particularly water hyacinth

# GEF FUNDING UNDER LVEMP

## 2

- Will focus on:
  - a) Establishing a cooperative for the sustainable management of the shared transboundary natural resources of the LVB; and
  - b) Supporting mitigation and prevention measures required to reverse the environmental degradation and improve livelihoods of communities:

# GEF GRANTS

- GEF grants proceeds will be managed by the LVBC on behalf of all countries and will be used mainly for financing regional activities and the capacity building at LVBC

USD \$ 7.0 million has been allocated.



# COMPONENTS SUPPORTED BY GEF

- Harmonization of policies, legislation, and regulatory standards;
- Ecosystem monitoring and applied research; and
- Project coordination and communication

## Sub- Component-Harmonization of policies, legislation, and regulatory standards

- Harmonize national policies, laws and regulations governing the utilization of fisheries and water resources;
- Develop the LVB water resources management Plan (WRMP)
- Update the Lake Victoria Fisheries Management Plan (FMP)
- Develop options for establishing the Lake Victoria Environmental Fund (LVEF) and identify sources of financing

# Sub-Component-Ecosystem monitoring and applied research

- Develop Water resources Information System for monitoring surface and ground water, and water quality;
- Develop a Decision Support system for water resources in LVB;
- Expand an Atmospheric Desposition Monitoring network in LVB;
- Establish the GIS- based database for the land use, hydrology, and biodiversity; and Lake Victoria Dynamic Information Framework at LVBC;
- Strengthen the LVBC Resources.

# Sub-Component-Ecosystem monitoring and applied research

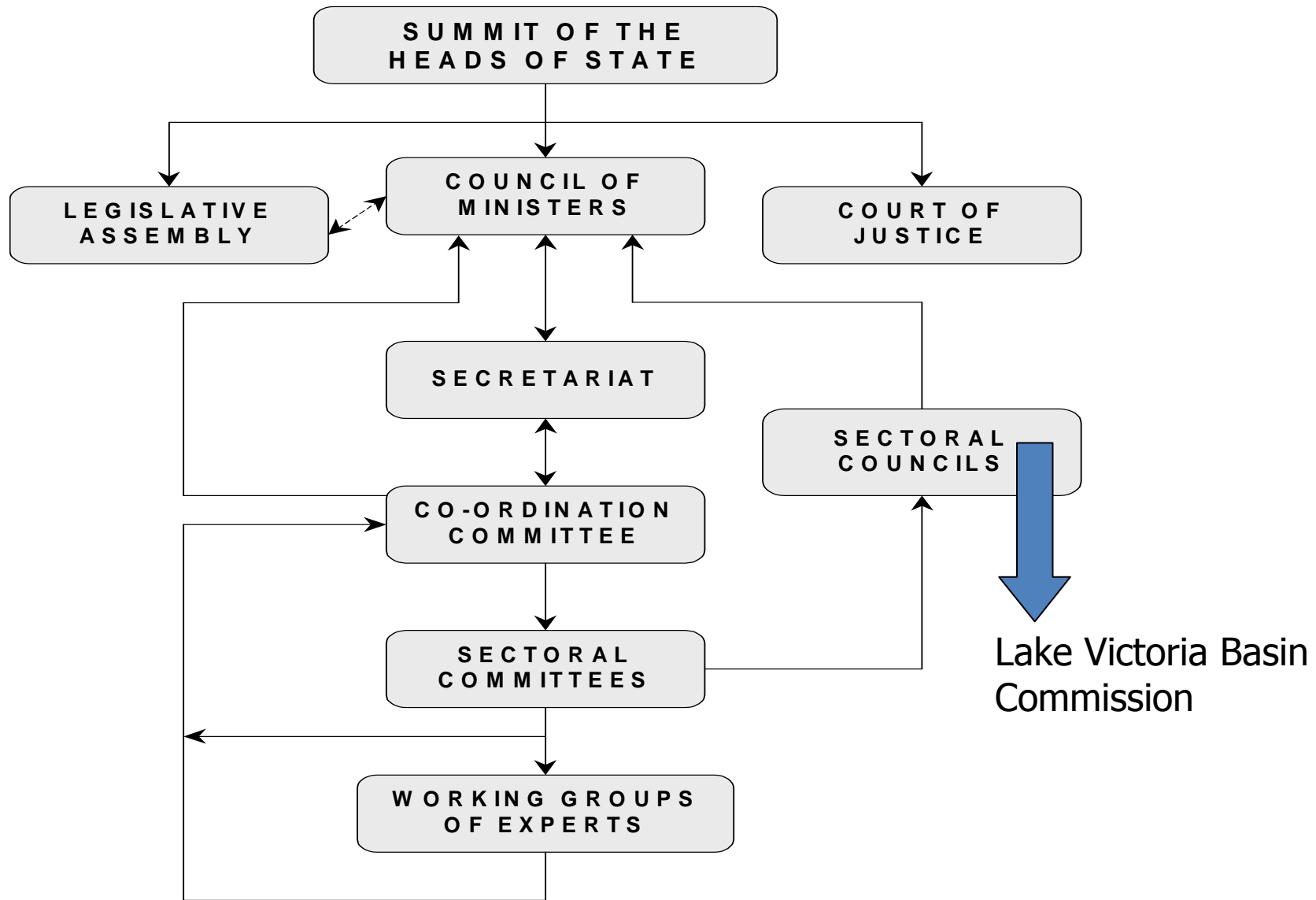
- Conduct bi-annual fish stock assessments;
- Conduct water hyacinth surveillance and implement the management strategy;
- Support LVFO to coordinate implementation of the FMP2

# Sub – Component-Project coordination and communication

- Project coordination and communication
- Monitoring and evaluation



## IMPLEMENTATION FOR LVEMP II



# OTHER FUNDING

- Sida
- IDA





**RIVER MARA ONE OF MAJOR INFLOWS INTO THE LAKE VICTORIA**







**SEWARAGE TREATMENT PLANT AT KISUMU**







**WATER HYACINTH BLOCK NAVIGATION**















ADULT NEOCHETINA WEEVIL







**SPRING SOURCE PROTECTION**









## ONE OF THE RELIC ISLANDS IN LAKE VICTORIA



# REMARKS

- I wish to thank GEF IW (notably Mr. Aduda, Mr. Mish ) for inviting our Organization to attend this Conference

**XIE**

**XIE**