

Key governance considerations for LMEs

Robin Mahon¹ and Lucia Fanning²

¹CERMES, University of the West Indies, Barbados

²Marine Affairs Program, Dalhousie University, Canada

Session 2

29 Sept 2015

Three key governance considerations for LMEs

- What is the scope of the LME governance module?
- Where do LMEs fit in global-regional ocean governance?
- What are appropriate governance arrangements for LMEs?

What is the scope of the LME governance module?

It may be useful to distinguish between:

‘Good governance’

Arrangements and processes that reflect internationally accepted principles and practices

‘Effective governance’

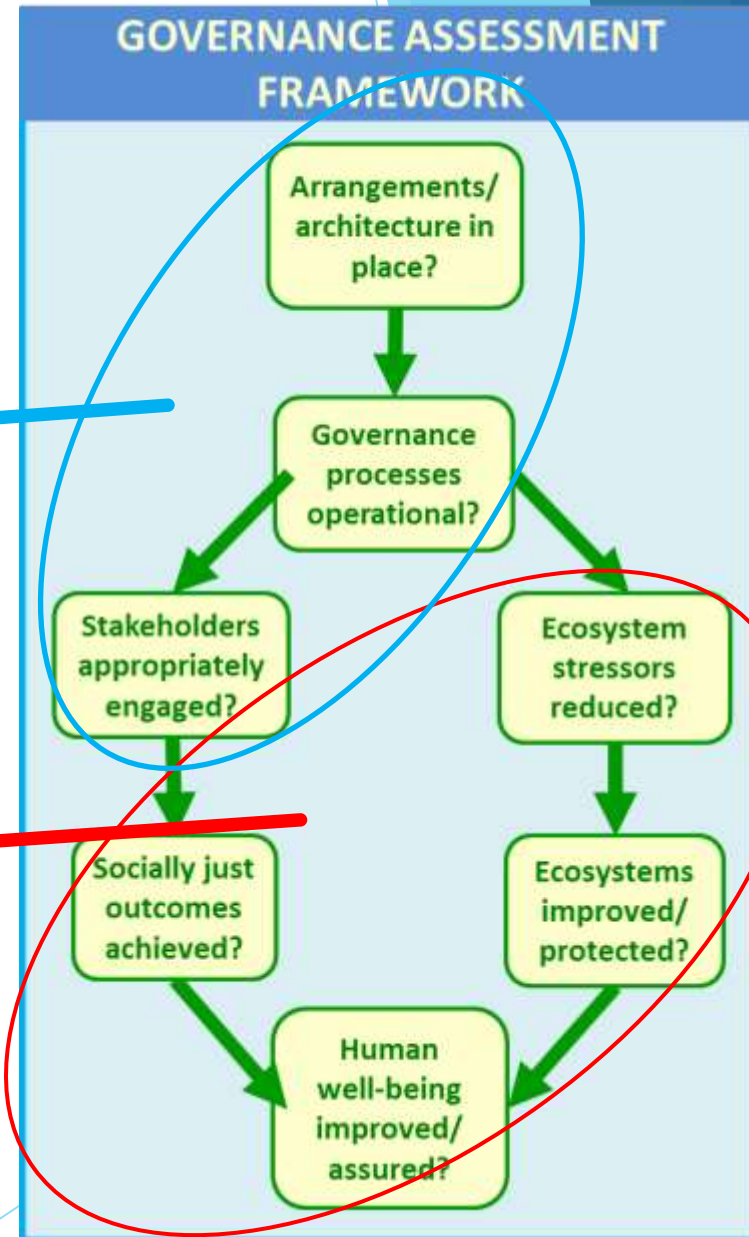
Whether governance has achieved what it set out to achieve

What is the scope of the LME governance module?

Stakeholder engagement
Adaptive management

This is a useful distinction:

- **Good governance** - focus of the governance module
- **Effective governance** - requires input from other modules - crosscutting



Where do LMEs fit in the global-regional ocean governance picture?

- LMEs are ecological management units

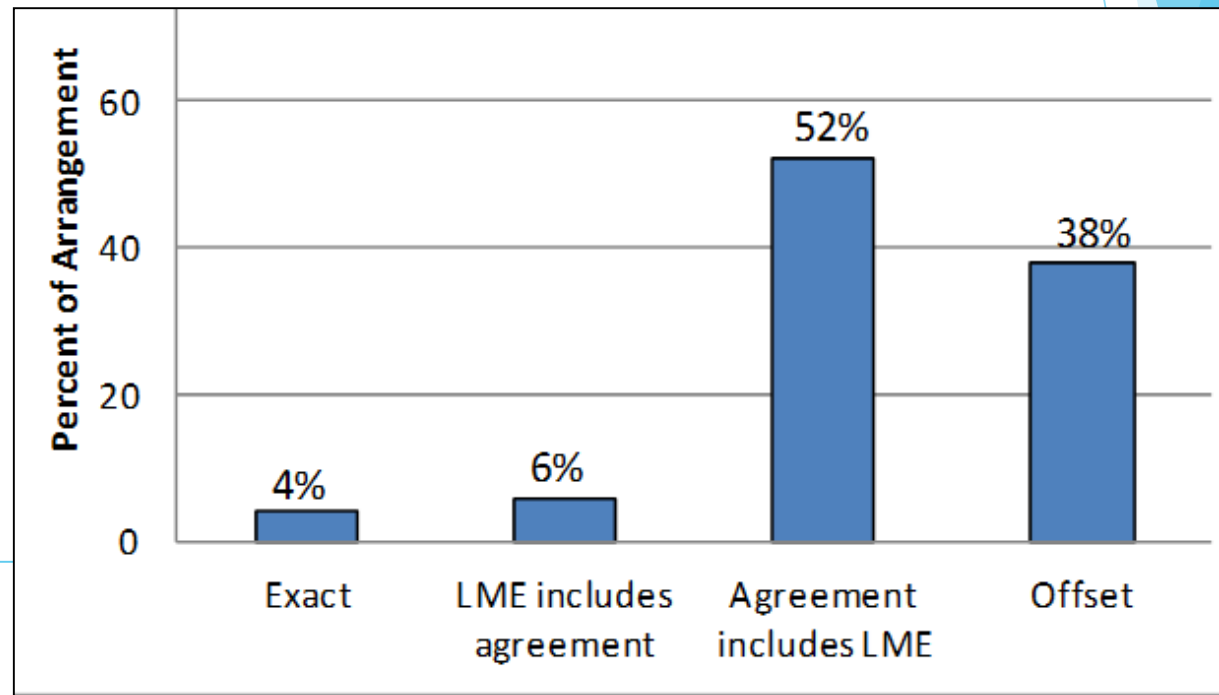
So:

- Fit of governance arrangements to LME boundaries matters

TWAP examined:

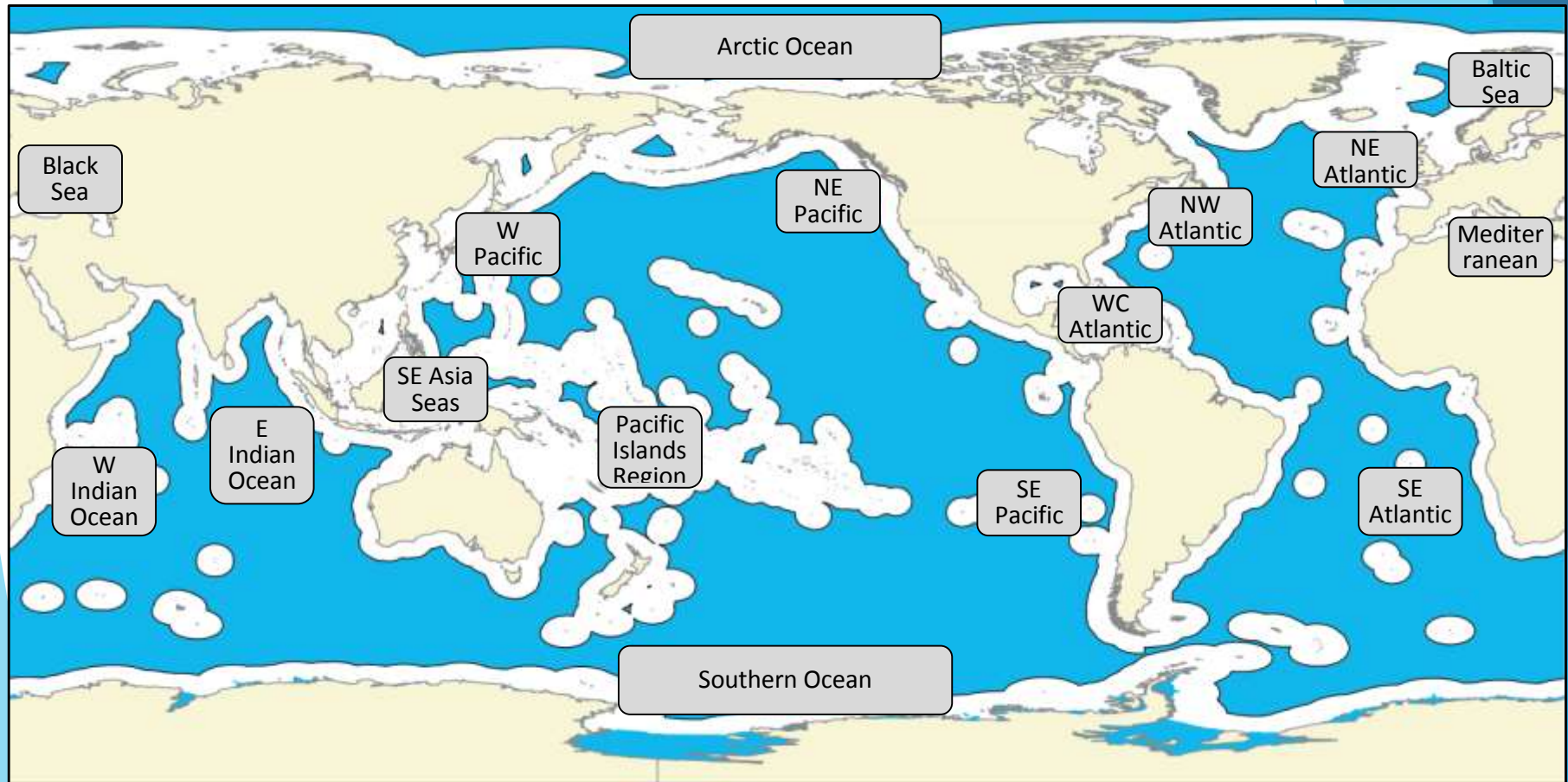
152 agreements

342 overlaps
with LMEs

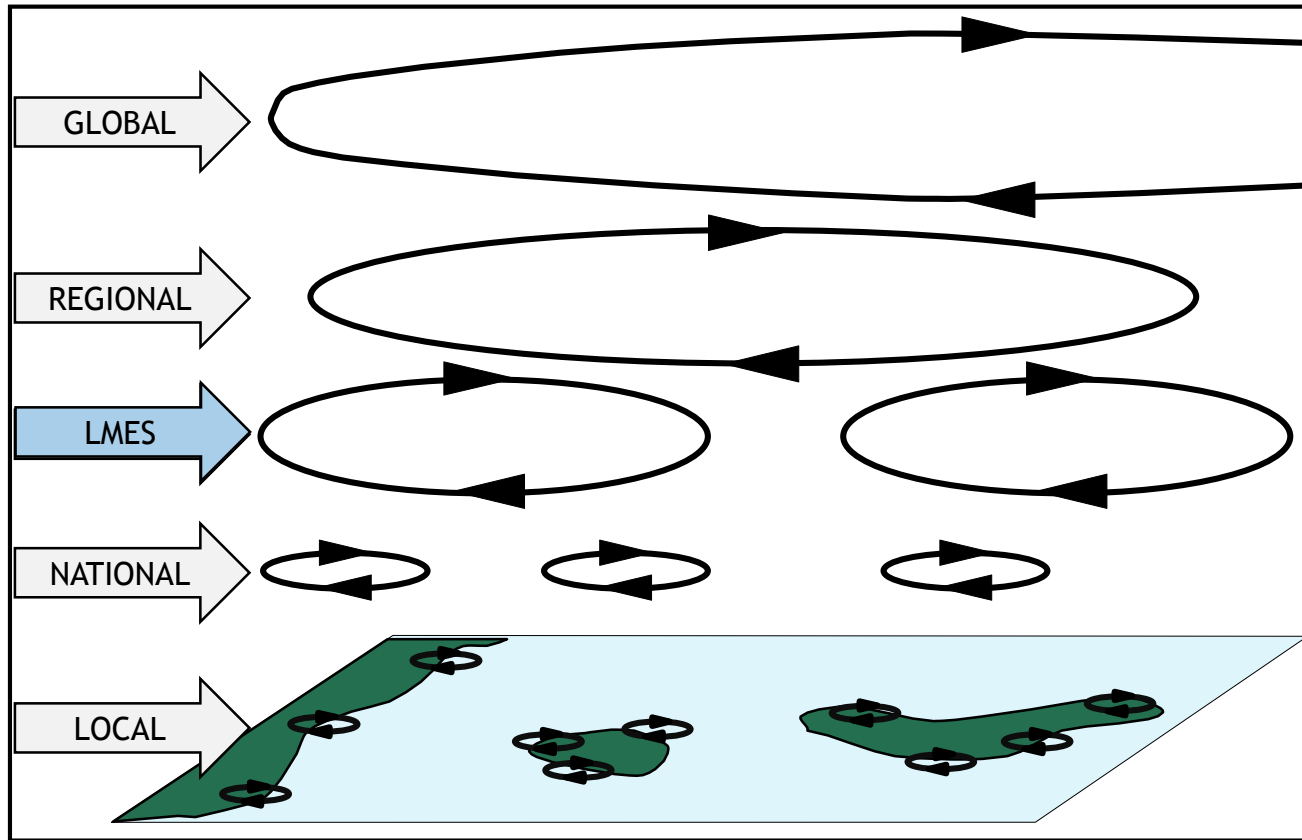


Where do LMEs fit in the global-regional ocean governance picture?

Regional clusters of arrangements



Where do LMEs fit in the global-regional ocean governance picture?



Where do LMEs fit in the global-regional ocean governance picture?

➤ If LME is one among several nested levels - discussion shifts from:

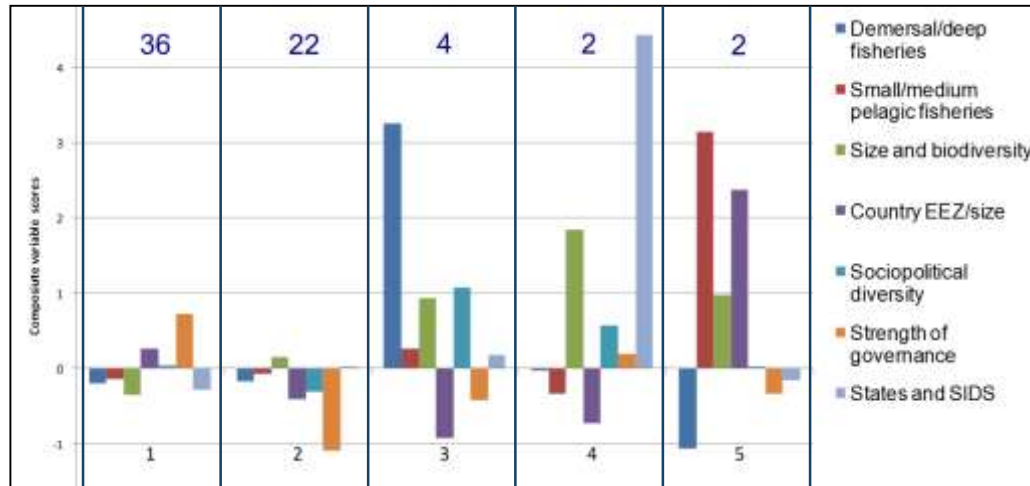
❖ How to make governance arrangements fit LMEs,

To,

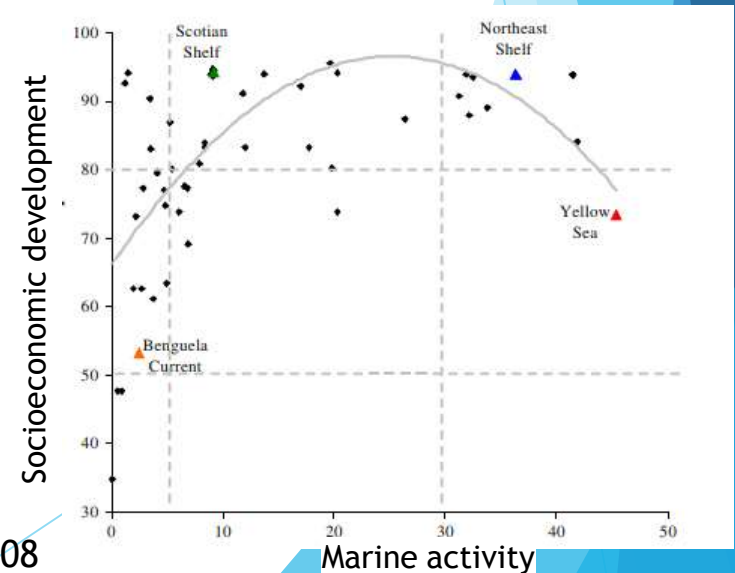
❖ How to address LME level concerns within existing arrangements (or clusters of arrangements).

What are appropriate governance arrangements for LMEs?

LMEs are diverse – one approach will probably not work for all



Mahon et al 2010



Hoagland et al. 2008

Marine activity

What are appropriate governance arrangements for LMEs??



Strengthening global governance of Large Marine Ecosystems by incorporating coastal management and Marine Protected Areas

Alfred M. Duda¹

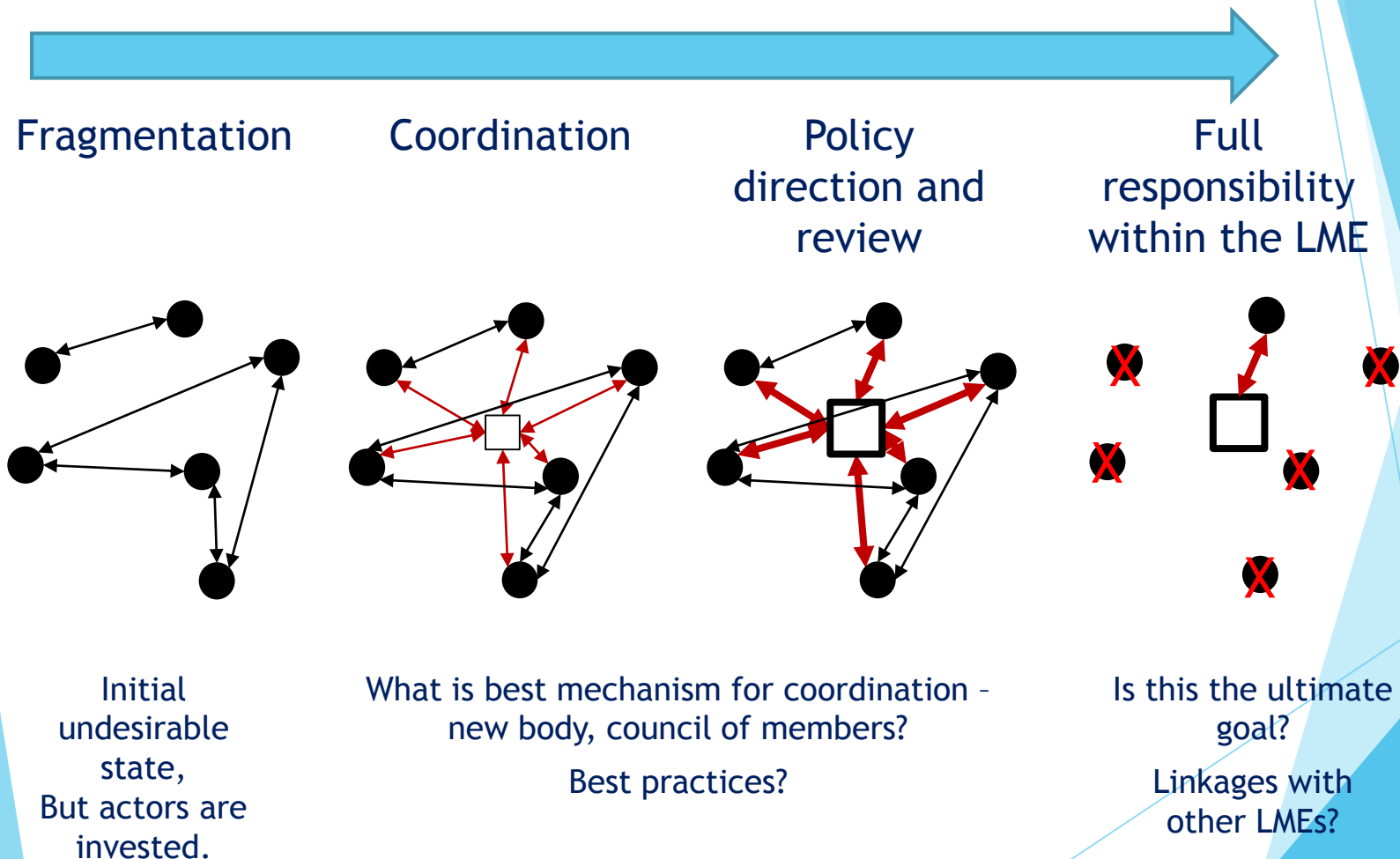
Global Environment Facility, Washington DC, United States

Duda identifies five approaches:

1. Adopting targets under a UNEP RS convention
2. Adding protocol or legally binding component to existing convention
3. Using existing fragmented institutions in hope that EBM will be adopted
4. Establishing new legally binding agreement to overcome fragmentation
5. New legally binding intergovernmental institution/commission with targets/deadlines

What are appropriate governance arrangements for LMEs?

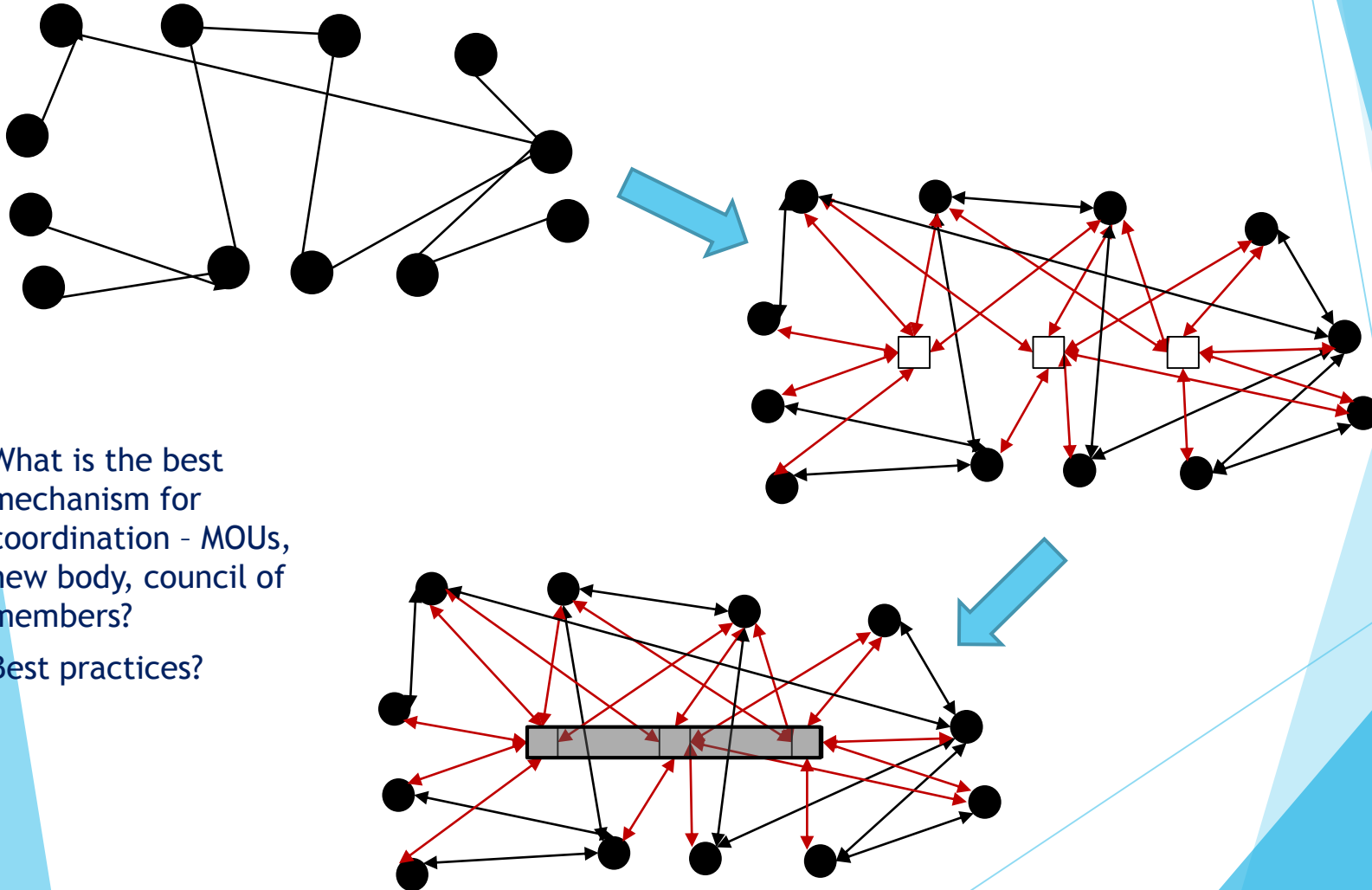
LME centric approach



What are appropriate governance arrangements for LMEs?

12 regional
arrangements
3 LMEs

A regional ocean governance cluster approach:



What is the best
mechanism for
coordination - MOUs,
new body, council of
members?

Best practices?

To summarise

Focused on arrangements/architecture

Assumed 'good' arrangements necessary for effective governance.

context for operational/process matters, e.g. planning, spatial and otherwise, enforcement, assessment, monitoring, etc.

Proposed three interlinked architecture considerations - worth investing in?

Can we have shared understanding of:

- What the LME module is about?
- Place of LMEs in global ocean governance?
- Appropriate governance arrangements for LMEs?

Addressing
them needs
input from
LMEs

Thanks