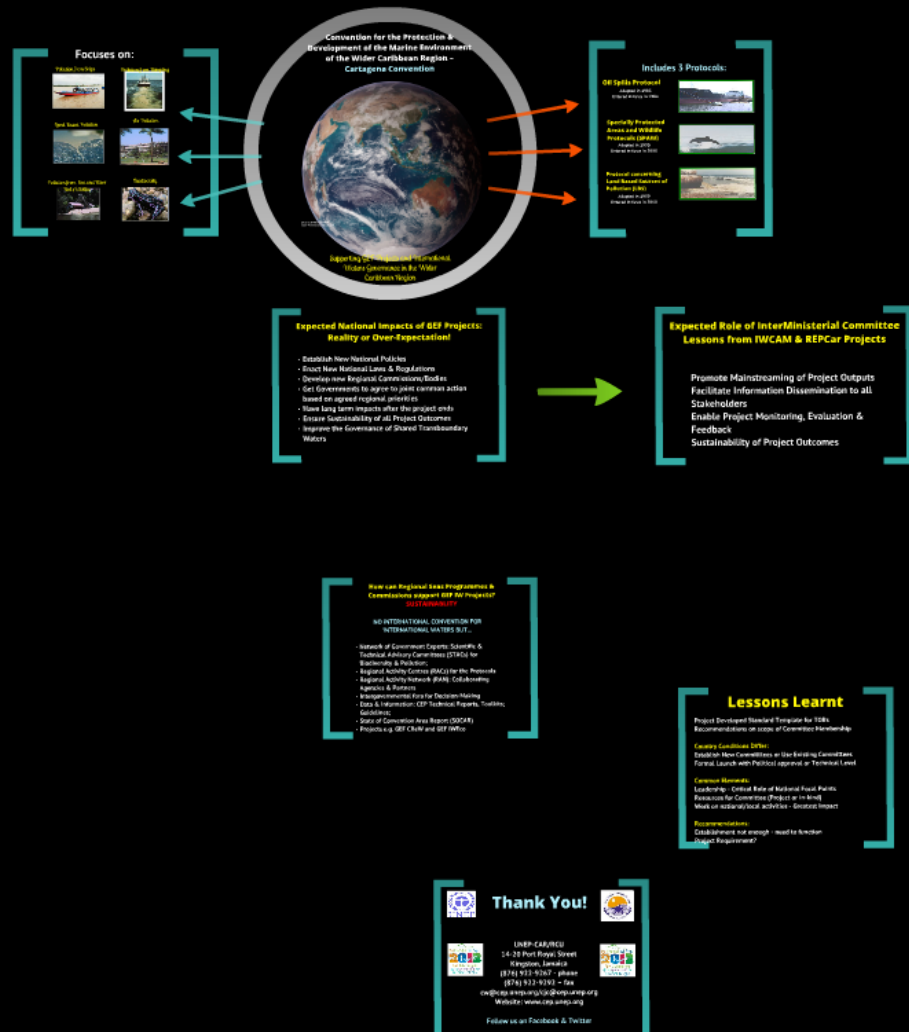
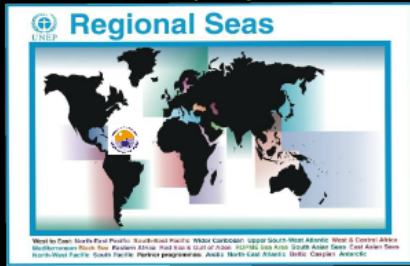


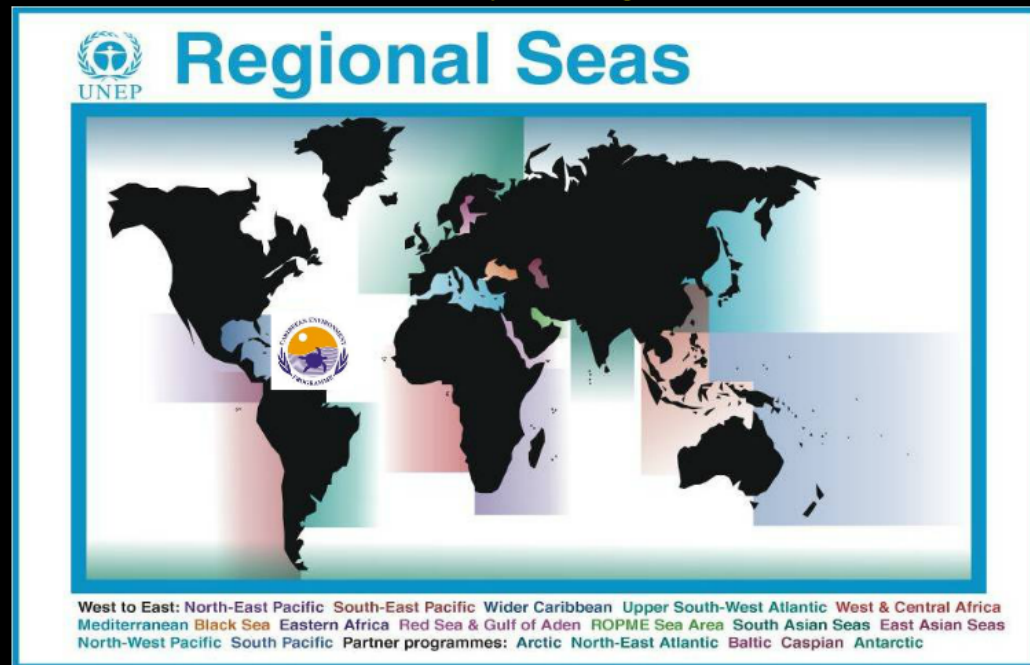
## 18 Regional Seas

### Comprising over 140 Countries



# 18 Regional Seas

*Comprising over 140 Countries*



Comprising over 140 Countries



# Regional Seas



West to East: North-East Pacific South-East Pacific Wider Caribbean Upper South-West Atlantic West & Central Africa  
Mediterranean Black Sea Eastern Africa Red Sea & Gulf of Aden ROPME Sea Area South Asian Seas East Asian Seas  
North-West Pacific South Pacific Partner programmes: Arctic North-East Atlantic Baltic Caspian Antarctic

# **Convention for the Protection & Development of the Marine Environment of the Wider Caribbean Region – Cartagena Convention**

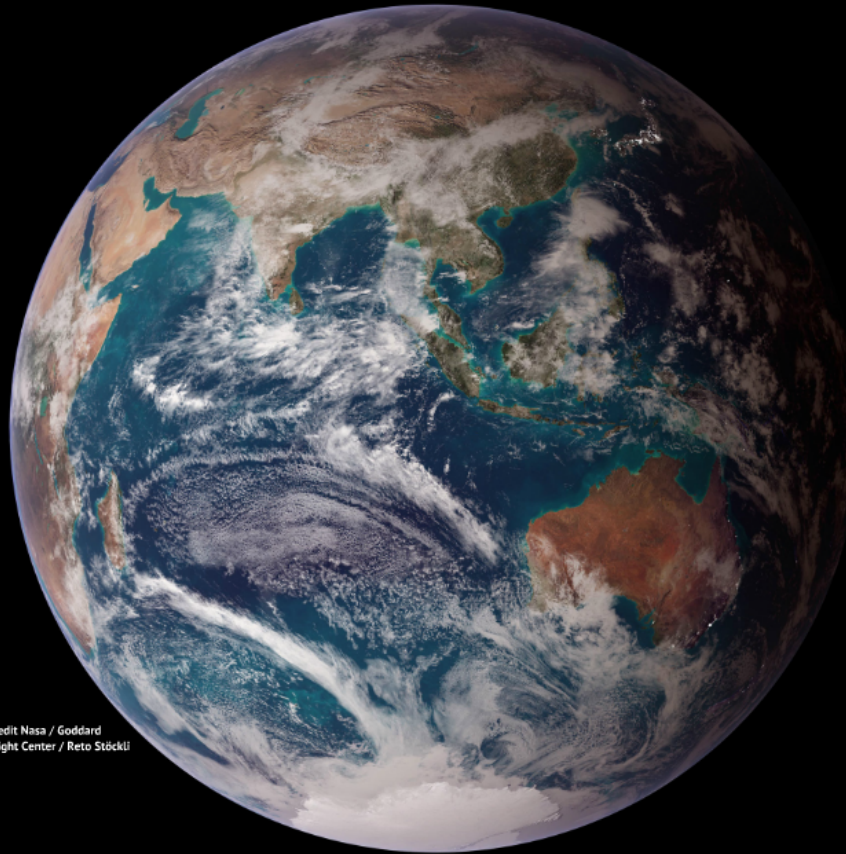
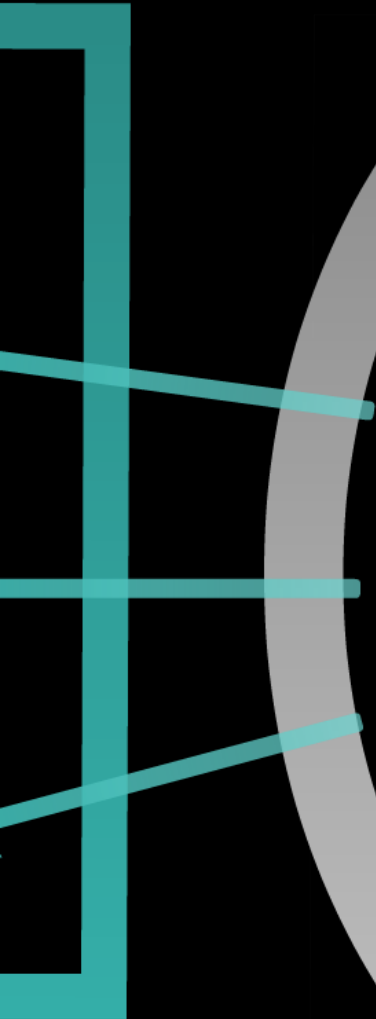
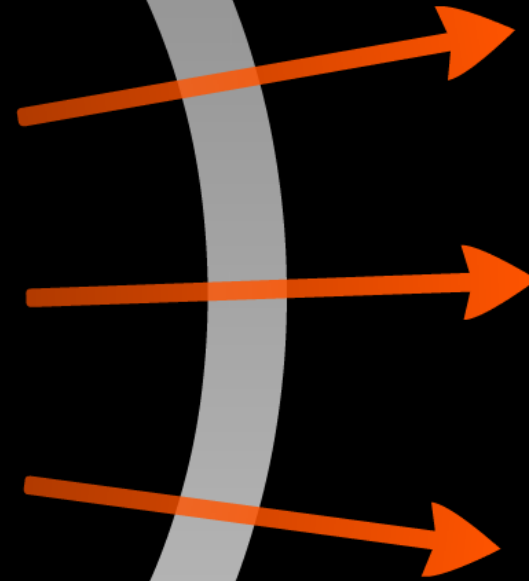


photo credit Nasa / Goddard  
Space Flight Center / Reto Stöckli

*Supporting GEF Projects and International  
Waters Governance in the Wider  
Caribbean Region*



## Includes 3 Protocols:

### **Oil Spills Protocol**

Adopted in 1983  
Entered in force in 1986



### **Specially Protected Areas and Wildlife Protocols (SPAW)**

Adopted in 1990  
Entered in force in 2000



### **Protocol concerning Land Based Sources of Pollution (LBS)**

Adopted in 1999  
Entered in force in 2010





# Focuses on:

Pollution from Ships



Pollution from Dumping



Land Based Pollution



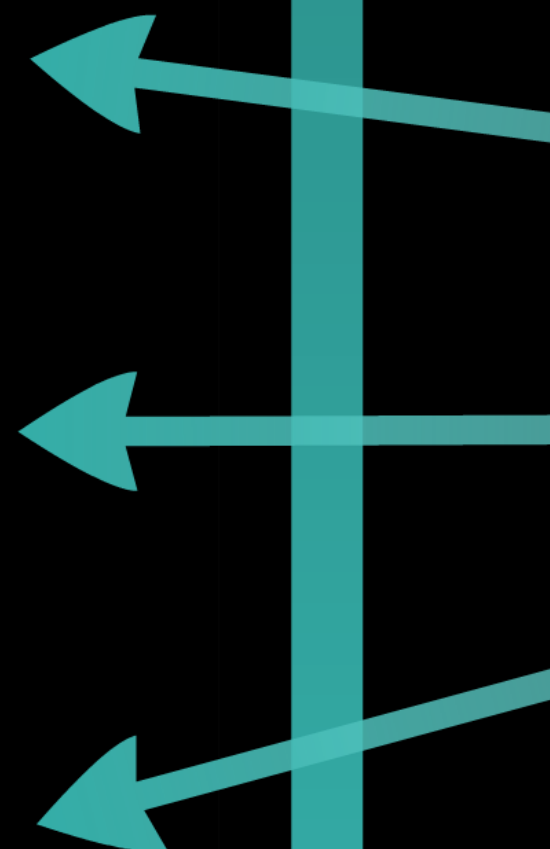
Air Pollution



Pollution from Sea and River  
Bed Activities



Biodiversity



# **How can Regional Seas Programmes & Commissions support GEF IW Projects?**

## **SUSTAINABILITY**

### **NO INTERNATIONAL CONVENTION FOR INTERNATIONAL WATERS BUT...**

- **Network of Government Experts: Scientific & Technical Advisory Committees (STACs) for Biodiversity & Pollution;**
- **Regional Activity Centres (RACs) for the Protocols**
- **Regional Activity Network (RAN): Collaborating Agencies & Partners**
- **Intergovernmental fora for Decision-Making**
- **Data & Information: CEP Technical Reports, Toolkits; Guidelines;**
- **State of Convention Area Report (SOCAR)**
- **Projects e.g. GEF CReW and GEF IWEco**

# **Expected National Impacts of GEF Projects: Reality or Over-Expectation!**

- **Establish New National Policies**
- **Enact New National Laws & Regulations**
- **Develop new Regional Commissions/Bodies**
- **Get Governments to agree to joint common action based on agreed regional priorities**
- **Have long term impacts after the project ends**
- **Ensure Sustainability of all Project Outcomes**
- **Improve the Governance of Shared Transboundary Waters**



# **Expected Role of InterMinisterial Committee**

## **Lessons from IWCAM & REPCar Projects**

**Promote Mainstreaming of Project Outputs**  
**Facilitate Information Dissemination to all Stakeholders**  
**Enable Project Monitoring, Evaluation & Feedback**  
**Sustainability of Project Outcomes**

# Lessons Learnt

Project Developed Standard Template for TORs  
Recommendations on scope of Committee Membership

## Country Conditions Differ:

Establish New Committees or Use Existing Committees  
Formal Launch with Political approval or Technical Level

## Common Elements:

Leadership - Critical Role of National Focal Points  
Resources for Committee (Project or in-kind)  
Work on national/local activities - Greatest Impact

## Recommendations:

Establishment not enough - need to function  
Project Requirement?



# Thank You!



**UNEP-CAR/RCU**  
**14-20 Port Royal Street**  
**Kingston, Jamaica**  
**(876) 922-9267 - phone**  
**(876) 922-9292 – fax**



**cw@cep.unep.org/cjc@cep.unep.org**  
**Website: [www.cep.unep.org](http://www.cep.unep.org)**

**Follow us on Facebook & Twitter**