



LME Project

Regional Oceanic Fisheries Management

Work areas

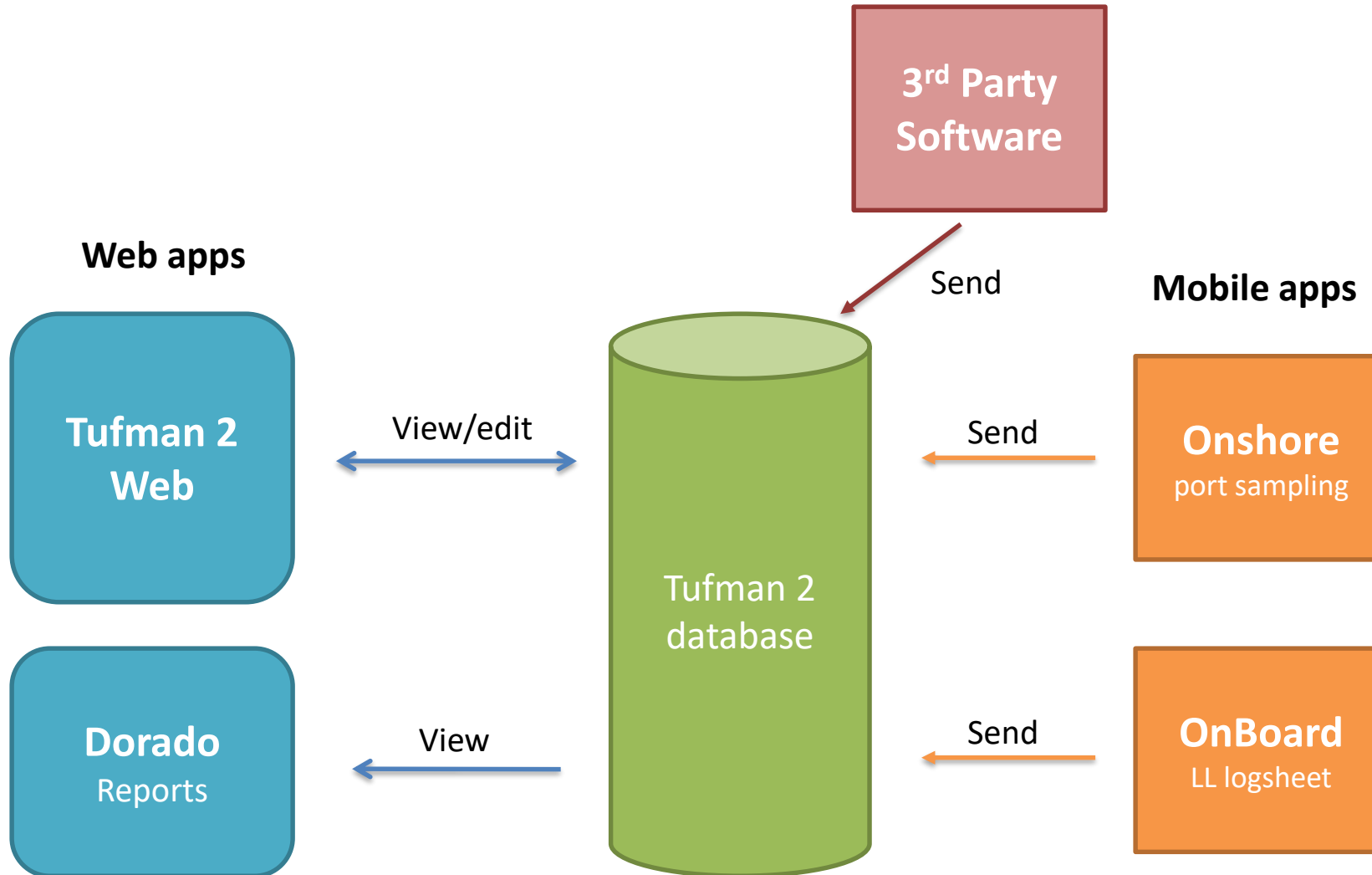
What topics will we cover?

- Tufman 2 (Data management tool)
- Sustainpacfish.net (project website)

What's Tufman 2?

...and what can it do?

- Database for fisheries information
 - Logsheets, unloading, observer, port sampling and other data
- Data entry and data checking tool
- Modern web app with secure, automatic connections to other applications and data sources (eg. eReporting)
- In use in many Pacific and other WCPFC countries

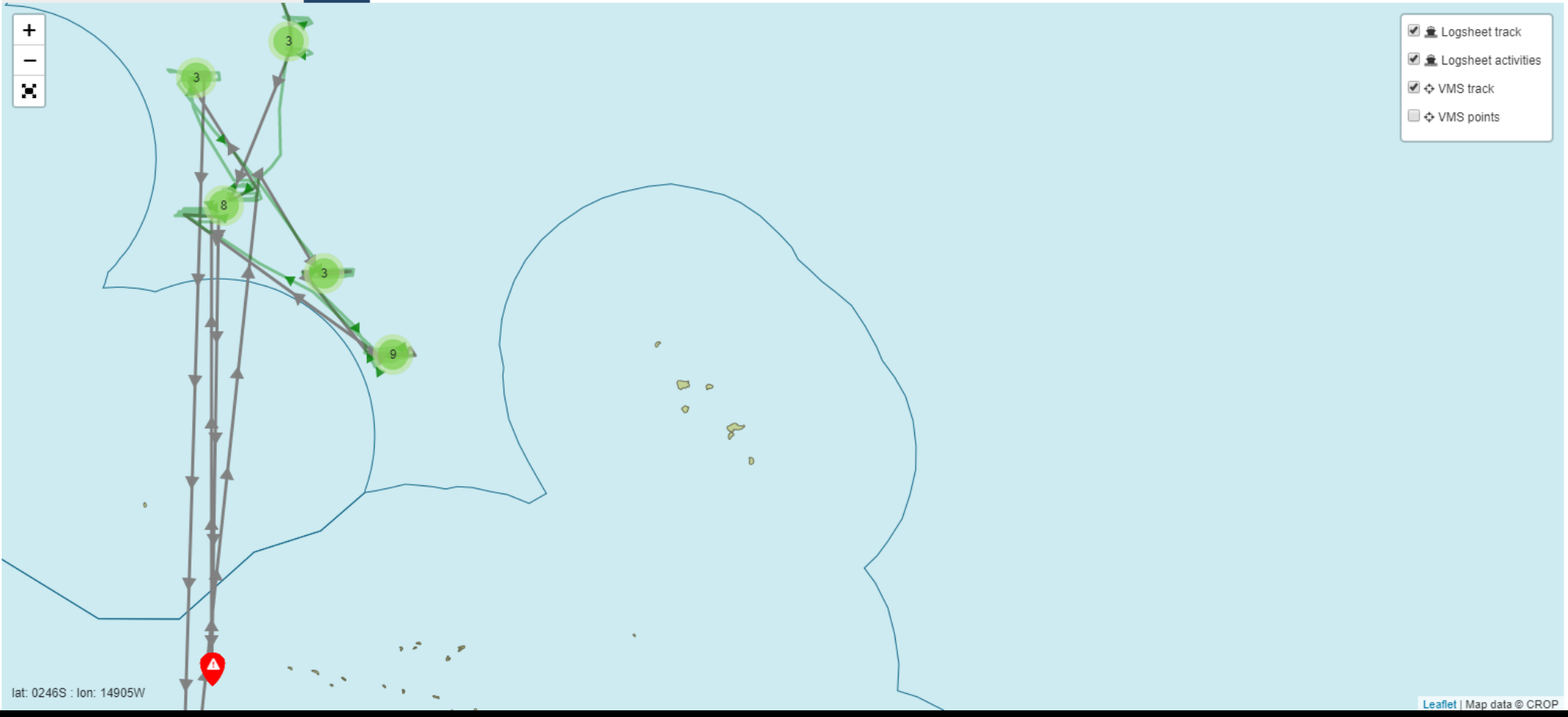


Tufman 2

What it does best

- Automatically implements data sharing and data quality rules
- eReporting
- Linking of different data sources (eg. Logsheets/unloading)

Activities Catch totals Charts **Map**



Save

Save & exit

Delete

Cancel

Drop attachments here

Attachments (1)

Actions

Info

Warnings and errors

Summary	
	Excessive_speed
	Excessive_speed
	Excessive_speed
	Excessive_speed

SustainPacFish

Project website

- www.sustainpacfish.net
- Multimedia resources and project published materials
- Responsive design, works nice on mobile
- Appropriate tool - not social media, less ongoing work required to have a good resource



PACIFIC ACTIONS FOR SUSTAINABLE OCEAN FISHERIES

SustainPacFish is the one-stop portal of the Oceanic Fisheries Management Project, to help those involved or interested in managing and conserving the Pacific's fisheries.

Here you can see the latest information on activities and progress towards achieving conservation management measures for sustaining our Western and Central Pacific fisheries.



FISH STOCKS

Sustaining fish stocks



CATCH & HARVEST

Managing fishing methods



COMPLIANCE

Following the rules



FISH STOCKS

Sustaining fish stocks



CATCH & HARVEST

Managing fishing methods



COMPLIANCE

Following the rules



ECONOMICS

Capturing employment & revenue benefits



BYCATCH

Conserving marine biodiversity



OBSERVERS

Watching, monitoring & reporting



PACIFIC OCEANIC FISHERIES

Reporting on all topics



Thank You

Questions?

